

# Real-Time Quaking-Induced Conversion Analysis for the Diagnosis of Sporadic Creutzfeldt-Jakob Disease in Korea

Jeong-Ho Park<sup>a,b</sup>

Yeong-Gon Choi<sup>b</sup>

Yun-Jung Lee<sup>b</sup>

Seok-Joo Park<sup>b</sup>

Hong-Seok Choi<sup>b</sup>

Kyung-Chan Choi<sup>c,d</sup>

Eun-Kyoung Choi<sup>e,f</sup>

Yong-Sun Kim<sup>a,b</sup>

<sup>a</sup>Korea CJD Diagnostic Center,  
Hallym University, Anyang, Korea

<sup>b</sup>Laboratory of Transmissible  
Spongiform Encephalopathy,  
Ilsong Institute of Life Science,  
Hallym University, Anyang, Korea

<sup>c</sup>Department of Pathology, Chuncheon  
Sacred Heart Hospital, Hallym University  
College of Medicine, Chuncheon, Korea

<sup>d</sup>Korea CJD Autopsy Center,  
Hallym University Sacred  
Heart Hospital, Anyang, Korea

<sup>e</sup>Department of Biomedical Gerontology,  
Graduate School of Hallym University,  
Chuncheon, Korea

<sup>f</sup>Laboratory of Cellular Aging and  
Neurodegeneration, Ilsong Institute  
of Life Science, Hallym University,  
Anyang, Korea

**Received** February 9, 2015

**Revised** August 19, 2015

**Accepted** August 20, 2015

## Correspondence

Eun-Kyoung Choi, PhD  
Laboratory of Cellular Aging and  
Neurodegeneration, Ilsong Institute  
of Life Science, Hallym University,  
15 Gwanpyeong-ro 170beon-gil,  
Dongan-gu, Anyang 14066, Korea  
Tel +82-31-380-1893  
Fax +82-31-388-3427  
E-mail ekchoi@hallym.ac.kr

Yong-Sun Kim, MD, PhD  
Laboratory of Transmissible Spongiform  
Encephalopathy, Ilsong Institute of  
Life Science, Hallym University,  
15 Gwanpyeong-ro 170beon-gil,  
Dongan-gu, Anyang 14066, Korea  
Tel +82-31-380-1858  
Fax +82-31-388-3427  
E-mail yskim@hallym.ac.kr

**Background and Purpose** The level of 14-3-3 protein in the cerebrospinal fluid (CSF) is increased in Creutzfeldt-Jakob disease (CJD) patients, which has led to it being used as a clinical biomarker for the ante-mortem diagnosis of human prion diseases. However, the specificity of the 14-3-3 protein is less reliable for CJD diagnosis. Newly developed assays including real-time quaking-induced conversion (RT-QuIC) have made it possible to detect the PrP<sup>Sc</sup>-like abnormal prion isoform with a high sensitivity in animal and human specimens that might contain a minute amount of PrP<sup>Sc</sup> due to *in vitro* prion replication.

**Methods** This study applied a highly sensitive RT-QuIC assay using recombinant human PrP to detect PrP<sup>Sc</sup> in the CSF of 81 patients with sporadic CJD (sCJD) in Korea.

**Results** RT-QuIC analysis of the CSF samples based on the expression levels of 14-3-3 and total tau proteins revealed positivity in 62 of 81 sCJD patients (sensitivity of 76.5%) but no positive results in the 100 non-CJD patients.

**Conclusions** The sensitivity of the RT-QuIC in this study was similar to that in some previous reports, and the specificity of RT-QuIC was higher than that of 14-3-3 in CSF, suggesting that RT-QuIC analysis can complement the weakness of the specificity of 14-3-3 for the diagnosis of sCJD. These results indicate that RT-QuIC might be very useful for the rapid and specific diagnosis of sCJD and provide a practical novel method for the ante-mortem diagnosis of human prion diseases.

**Key Words** Creutzfeldt-Jakob disease, cerebrospinal fluid, RT-QuIC, 14-3-3, total tau protein.

## INTRODUCTION

Human prion diseases are diagnosed by postmortem pathological examinations of tonsils and brain tissues.<sup>1</sup> Current clinical diagnostic criteria are based on the clinical features and analytical results from electroencephalography (EEG), brain magnetic resonance imaging (MRI), and the presence of the 14-3-3 protein in the cerebrospinal fluid (CSF).<sup>2,3</sup> The expression of the 14-3-3 protein in CSF is up-regulated not only in patients with CJD but also in patients with other neurodegenerative disorders.<sup>4,5</sup> The only reliable molecular marker of human prion diseases is the pathogenic prion protein (PrP<sup>Sc</sup>). From a diagnostic perspective, body fluids such as CSF, blood, and urine are valuable for the early and specific diagnosis of human prion diseases.<sup>6</sup> Since the levels of PrP<sup>Sc</sup> in these fluids are known to be extremely low, the efficient *in vitro* amplification of minute PrP<sup>Sc</sup> is an encouraging approach for diagnosing human prion diseases at an early phase and with a higher level of precision.<sup>6,7</sup> Recent studies have utilized ultrasensitive tests such as protein-misfolding cyclic amplification, quaking-induced conversion (QuIC), the amyloid seeding assay, and

© This is an Open Access article distributed under the terms of the Creative Commons Attribution Non-Commercial License (<http://creativecommons.org/licenses/by-nc/3.0>) which permits unrestricted non-commercial use, distribution, and reproduction in any medium, provided the original work is properly cited.

the surround optical fiber immunoassay for diagnosing prion diseases.<sup>8,9</sup> In the QuIC assay, thioflavin T (ThT) dye displays an enhanced fluorescence and a characteristic red shift of its emission spectrum when it incorporates into the  $\beta$ -sheet-rich structures that are observed in amyloid aggregates.<sup>10</sup> A version of the QuIC assay that is able to measure the ThT fluorescence in real time, called real-time QuIC (RT-QuIC), was recently developed for the diagnosis of sporadic CJD (sCJD) and genetic CJD in CSF samples.<sup>11,12</sup> In addition, RT-QuIC analysis may ameliorate the specificity weakness of 14-3-3 in diagnosing sCJD.<sup>8</sup> In this study, we tried to check whether RT-QuIC assay is useful for the diagnosis of probable sCJD patients by using the CSF of the patients diagnosed by the presence of 14-3-3 and high levels of total tau protein in CSF.

## METHODS

### Patients

CSF specimens were obtained from 81 sCJD patients [37 females and 44 males; aged 27–86 years,  $65.3 \pm 11.2$  years (mean  $\pm$  SD)] diagnosed as definite or probable cases, as well as from 100 non-CJD subjects in the Republic of Korea. None of the patients carried the mutation in *PRNP*. The patients were diagnosed as sCJD based on the specific EEG findings, specific hyperintensity in the cerebral cortex in diffusion-weighted MRI, and the presence of the 14-3-3 protein in CSF. The CSF, blood samples, and personal information of all of the subjects were collected from data obtained during 2010–2014 in the nationwide CJD surveillance program that was established in the Republic of Korea in 2001. All of the experiments were performed blinded for personal information and clinical data. PrP genotyping was performed using genomic DNA extracted from peripheral blood leukocytes as described previously.<sup>13</sup>

### Immunoblotting

Proteins of the CSF samples were separated using 12% sodium dodecyl sulfate-polyacrylamide gel electrophoresis and transferred to polyvinylidene difluoride membranes (Amersham Biosciences, Freiberg, Germany). After blocking with 5% skim milk in TBS with 0.1% Tween-20, the membranes were incubated with rabbit polyclonal anti-14-3-3 antibody (1:500; Santa Cruz Biotechnology, Santa Cruz, CA, USA) and sequentially with horseradish-peroxidase-conjugated anti-rabbit IgG (1:5,000; Thermo Fisher Scientific Inc., Waltham, MA, USA). The 14-3-3 protein bands were detected using an enhanced chemiluminescence detection system (Thermo Fisher Scientific Inc., Waltham, MA, USA).

### Determination of the total tau protein level

The levels of total tau protein in CSF were measured using an ELISA kit following the manufacturer's instructions (Thermo Fisher Scientific Inc., Waltham, MA, USA). Briefly, each CSF sample (50  $\mu$ L) was diluted in sample diluent (1:1 v/v) in the kit prior to incubation with the anti-tau antibody. The colorimetric reaction was measured at 450 nm with a microplate reader (SpectraMax 190; Molecular Devices, CA, USA). The total tau protein concentration is reported herein as the mean value of duplicate measurements.

### Expression and purification of recombinant human PrP

Recombinant PrP using a plasmid containing a DNA sequence coding for residues 24–234 of the human PrP sequence was expressed, refolded into a soluble form, and purified as described previously.<sup>11</sup> Briefly, the DNA sequence coding for human PrP was amplified by the polymerase chain reaction and ligated into the pET41 vector with Nde I-Hind III inserts (EMD Biosciences Inc., Madison, WI, USA), and the obtained sequence was verified by sequencing. After transforming the plasmids into *E. coli* BL21 (DE3) (EMD Biosciences Inc., Madison, WI, USA), the enriched recombinant human PrP (rec HuPrP) was purified using a previously described method with minor modifications.<sup>11</sup> Briefly, the denatured rec HuPrP was incubated with a Ni-NTA Superflow resin (Qiagen, Valencia, CA, USA) and refolded with a linear gradient over 6 h at a flow rate of 1 mL/min using the AKTA Purifier system (GE Healthcare Europe GmbH, Germany) and then eluted with 100 mM sodium phosphate (pH 5.8) containing 500 mM imidazole and 10 mM Tris. Finally, the rec HuPrP was filtered and dialyzed against 10 mM phosphate (pH 5.8) before its concentration was determined. Purified aliquots of the proteins were stored at  $-80^\circ\text{C}$  prior to use. The plasmid containing a DNA sequence coding for human prion protein (residues 24–234) was provided by Dr. Noriyuki Nishida at Nagasaki University.

### RT-QuIC assay

The RT-QuIC assay was performed as described previously.<sup>11</sup> The composition of the RT-QuIC reaction buffer was as follows: 500 mM NaCl, 25 mM PIPES (pH 7.0), 1 mM EDTA, and 10  $\mu$ M ThT. To perform the RT-QuIC assay, freshly thawed rec HuPrP (0.1 mg/mL) in 95  $\mu$ L of the reaction buffer and 5  $\mu$ L of CSF was transferred to each well in a 96-well optically black bottom plate (Nunc, Rochester, NY, USA) for CSF-seeded reactions. A sample of sCJD brain tissue from the "Korea CJD Autopsy Center" was used as a positive control, as shown in Fig. 1. Artificial CSF (A-CSF) was used as a negative control in the RT-QuIC assay. To

prevent contamination, we used non-infectious materials and filter tips inside a biological safety cabinet in a prion-free laboratory. The 96-well plate was covered with sealing tape (Nunc) and incubated in a fluorescence plate reader (Infinite F200, TECAN, Männedorf, Switzerland) at 37°C with intermittent shaking. The ThT fluorescence was measured (for excitation at 450 nm and emissions at 480 nm) every 10 min. Each experimental sample and control sample (not containing seeded A-CSF) was run in quadruplicate. The ThT fluorescence was measured in relative fluorescence units (i.e., rfu; i.e., relative to the negative control or A-CSF), and the average fluorescence for each quadruplicate sample was monitored over time. An rfu value of 250–400 for the brain homogenate (BH) of a normal human and A-CSF was considered as the baseline. All RT-QuIC assays were performed blinded for personal information and clinical data.

### Statistical analysis

Statistical analysis was performed as described previously.<sup>14</sup>

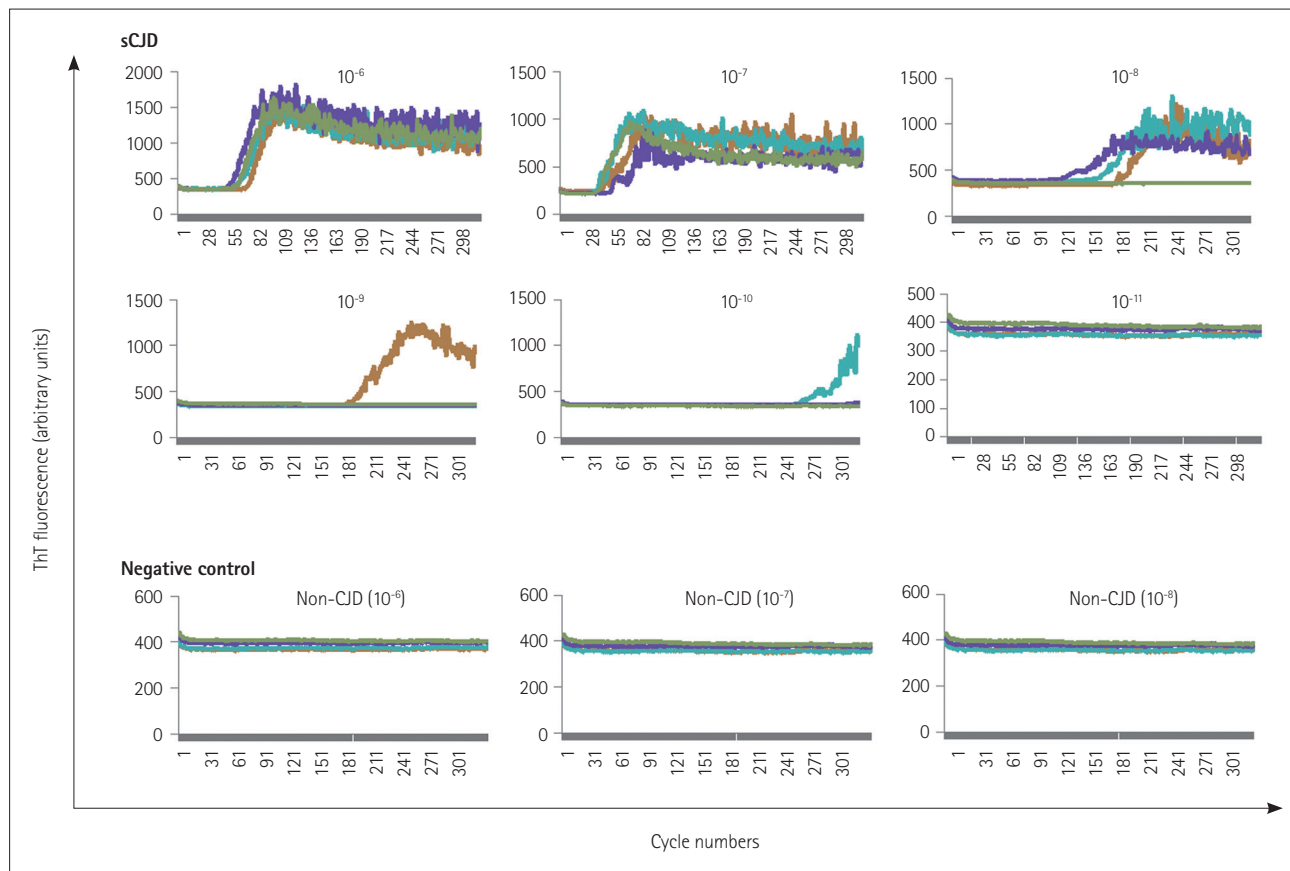
Total tau protein levels in the CSF were compared between sCJD and non-CJD patients using the two-tailed *t*-test. The Mann-Whitney U test was used for the statistical comparisons of the age at onset. Differences were considered statistically significant when  $p < 0.05$ . All analyses were performed using GraphPad Prism 4 software (GraphPad Software Inc., San Diego, CA, USA) and IBM SPSS Statistics (IBM, USA).

### Ethical issues

Informed consent was obtained from patients and/or the patients' families. The study protocol was approved by the Ethics Committee of Hallym University (HIRB-2015-003).

## RESULTS

We first used the RT-QuIC assay to determine whether PrP<sup>Sc</sup> in the BH of a sCJD patient can function as a prion seed. The sCJD BH was serially diluted (from  $10^{-3}$  to  $10^{-12}$  in 10-fold steps) with A-CSF and then used each of these dilu-



**Fig. 1.** Detection limit of RT-QuIC using the brain homogenate (BH) of a sCJD patient as prion seeds. The colored curves indicate the kinetics of ThT fluorescence in an individual reaction seeded with 10% sCJD BH (w/v) at dilutions ranging from  $10^{-6}$  to  $10^{-11}$ . The indicated dilutions ( $10^{-6}$  to  $10^{-8}$ ) of normal human BH were used as negative controls. ThT fluorescence (y-axis) was measured in relative fluorescence units (rfu; i.e., relative to normal control BH), and the average fluorescence for each quadruplicate sample was monitored for 10 min (one cycle; x-axis). An rfu value of 400 for the normal human BH was considered as the baseline. The graphs are representative of three independent experiments. CJD: Creutzfeldt-Jakob disease, RT-QuIC: real-time quaking-induced conversion, sCJD: sporadic CJD, ThT: thioflavin T.

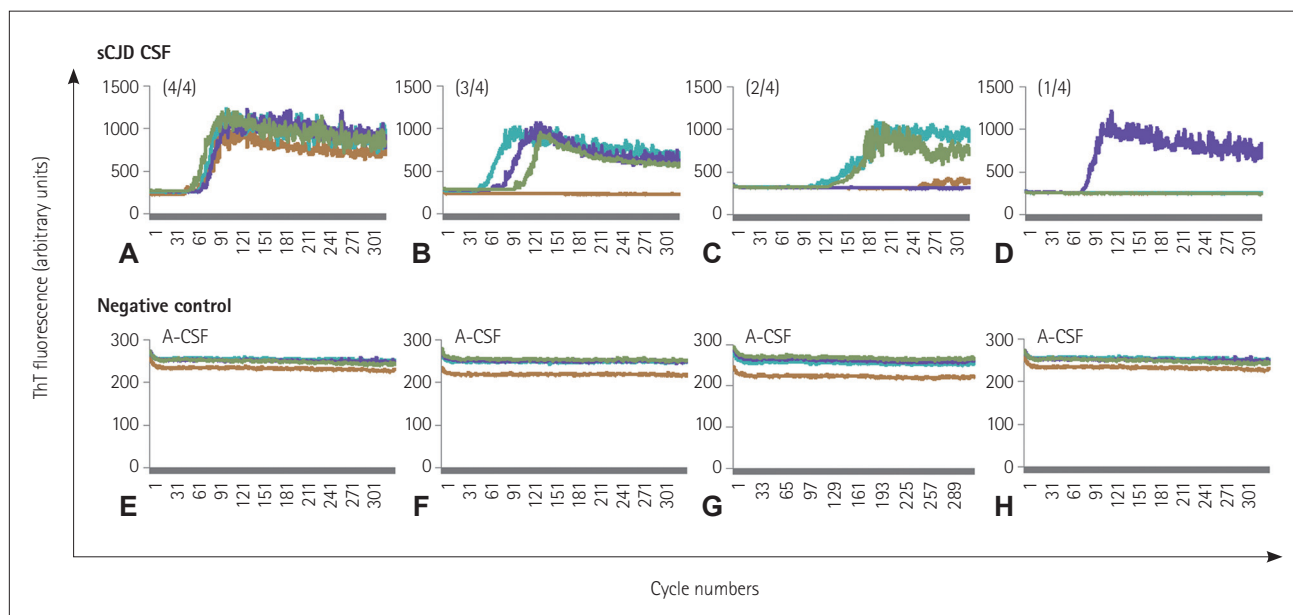
tions as a prion seed in the RT-QuIC reaction. We observed the high peaks of ThT fluorescence in all four of the quadruplicate samples when the sCJD BH was used at dilutions of  $10^{-3}$  to  $10^{-7}$ , in three of the quadruplicate samples at a dilution of  $10^{-8}$ , in one at dilutions of  $10^{-9}$  and  $10^{-10}$ , and in none at dilutions of  $10^{-11}$  and  $10^{-12}$  (data for dilutions of  $10^{-3}$  to  $10^{-5}$  not shown) (Fig. 1). In addition, there was no significant ThT fluorescence peak in the negative control samples (at dilutions of  $10^{-6}$  to  $10^{-8}$ ), and so we used a  $10^{-6}$  dilution of the 10% BH from a sCJD patient as a positive control for the RT-QuIC assay in this study.

We next evaluated the availability of the RT-QuIC assay using CSF specimens of 81 sCJD patients with higher levels of total tau protein and the presence of the 14-3-3 protein in their CSF in order to improve the diagnostic accuracy of sCJD (Table 1). The RT-QuIC reaction was considered to be positive even though only one reading of the quadruplicate samples was 900 rfu or greater at 320 cycles. By 320 cycles (1 cycle takes 10 min) the number of sCJD CSF-seeded reactions showed increased fluorescence when compared to the approximate baseline of 250 rfu for A-CSF (the negative control) (Fig. 2). The fluorescence began to increase at a median of 60 cycles in the 40 CSF samples of sCJD patients and after 150 cycles in the 22 CSF samples (Fig. 2). Of the 81 specimens with 14-3-3-positive CSF, 62 were positive for the ThT fluorescence signal of RT-QuIC (sensitivity of 76.5%) (Supplementary Table 1 in the online-only Data

Supplement), but there was no signal for the CSF specimens of the 100 non-CJD patients (Supplementary Table 2 in the online-only Data Supplement). These observations indicate that PrP<sup>Sc</sup> in the CSF of sCJD patients functions as a prion seed, and that the rec HuPrP utilized as a substrate for prion conversion undergoes a conformational change into a  $\beta$ -sheet in the RT-QuIC reaction. In addition, we checked the expression levels of 14-3-3 and total tau proteins in the CSF samples of sCJD patients. All of the 81 CSF specimens were positive for 14-3-3, whereas the levels of total tau protein varied (Table 1). The distributions of sex and age did not differ significantly among the four quadruplicate samples, but the CSF produced four positive reactions in the quadruplicate samples in the RT-QuIC analysis had the highest average levels of total tau protein (Table 1).

## DISCUSSION

In this study we evaluated the diagnostic application of the RT-QuIC assay in Korean patients with definite or probable sCJD. The RT-QuIC assay showed a sensitivity of 76.5% in 81 CSF samples of Korean patients with sCJD (Table 1). The sensitivity and specificity of CSF-based RT-QuIC analysis of this study were similar to the results obtained in previous studies involving sCJD patients, which demonstrated a sensitivity of >80% and a specificity of 100% in CJD specimens from Japan and Australia.<sup>11,12</sup> In another previous study,



**Fig. 2.** Kinetics of RT-QuIC analysis using the CSF of sCJD patients. The four representative CSF samples of the patients with sCJD for the RT-QuIC reaction (A: four positive reactions of ThT fluorescence in the quadruplicate samples, B: three positive reactions in the quadruplicate samples, C: two positive reactions, D: one positive reaction) and the negative control (E-H: A-CSF). Each colored curve represents the kinetics of the ThT fluorescence (four colors for the quadruplicate samples). The graphs are representative of three independent experiments. A-CSF: artificial CSF, CSF: cerebrospinal fluid, RT-QuIC: real-time quaking-induced conversion, sCJD: sporadic CJD, ThT: thioflavin T.

**Table 1.** The profile of biomarkers and RT-QuIC positivity of 81 CSF of sCJD patients with 14-3-3 protein

Characteristic*	Positivity of RT-QuIC reaction				<i>p</i> value (vs. non-CJD)
	1/4	2/4	3/4	4/4	
Sex, <i>n</i>					
Female	4	2	8	14	NA
Male	3	4	8	19	NA
Age at sampling (y)					
Mean±SD	65±7	64±10	68±10	65±11	0.66
14-3-3 protein	<i>p</i> <sup>†</sup>	<i>p</i>	<i>p</i>	<i>p</i>	NA
Total tau levels (pg/mL) <sup>‡</sup>					
Mean±SD	7,253±8,375	6,395±5,940	6,805±8,652	9,160±6,564	<0.0001
RT-QuIC reaction					
Sensitivity (%)	11.3 (7/62)	9.7 (6/62)	25.8 (16/62)	53.2 (33/62)	NA

\*After checking the levels of 14-3-3 protein in CSF, RT-QuIC assays were performed using the CSF specimens of definite or probable sCJD patients in the Republic of Korea (37 females and 44 males; aged 27–86 years; mean age 65.3±11.2 years). CSF showing at least one positive reaction of quadruplicate was defined as positive in the RT-QuIC reaction. The symbols of positivity of RT-QuIC reaction (1/4, 2/4, 3/4, and 4/4) mean positivity when one, two, three or four of the four wells showed more than 900 rfu (thioflavin T) within 320 cycles. The *p* value was calculated by the 62 RT-QuIC-positive patients and 100 non-CJD patients. Non-CJD in the *p* value indicates 100 of non-CJD patients who showed no ThT fluorescence signal in their CSF specimens. †*p*: positive reaction, ‡Total tau levels in CSF has been used as a biomarker for the diagnosis of CJD (total tau >1,400 pg/mL).<sup>14</sup> CJD: Creutzfeldt-Jakob disease, CSF: cerebrospinal fluid, NA: not available, RT-QuIC: real-time quaking-induced conversion, sCJD: sporadic CJD.

RT-QuIC analysis showed a sensitivity of 84% and a specificity of 100% in the CSF of sCJD patients.<sup>11,15</sup> One other CSF-based RT-QuIC analysis revealed a sensitivity of 85–90% and a specificity of nearly 100%, which suggests the superiority of RT-QuIC analysis over other diagnostic methods based on the expression levels of total tau and 14-3-3 proteins that have thus far been used as the diagnostic markers of human prion diseases.<sup>8</sup>

The level of the 14-3-3 protein in CSF is already commonly used as a helpful biomarker in the diagnostics of human prion diseases in many countries,<sup>7</sup> including as a determinant biomarker for diagnosing CJD. Several groups have recently begun to apply the RT-QuIC method in the diagnosis of human prion diseases.<sup>8,15-17</sup> We therefore measured both the positivity in the RT-QuIC reaction and the expression levels of 14-3-3 and total tau proteins using the CSF of patients with sCJD. For the patients with the highest average level of total tau protein detected in CSF, ThT fluorescence positivity in the RT-QuIC reaction was detected in all four of the quadruplicate samples, which indicates that there may be a correlation between the levels of total tau protein and the pathogenic prion isoform in CSF. Overall, we have found that there was a moderate correlation between the positivities of the 14-3-3 protein and the RT-QuIC analysis and between the positivities of total tau and the RT-QuIC analysis in the CSF of Korean patients (Supplementary Table 1 in the online-only Data Supplement).

The smaller number cases of sCJD in this study may have been responsible for the negative results for sCJD in the RT-QuIC analysis. The 14-3-3 protein was present in the CSF of three of the sCJD patients (aged 27, 42, and 43 years) who

were younger than the average age of patients negative in the CSF-based RT-QuIC analysis, and the levels of total tau protein in their CSF were higher than those in controls (1400 pg/mL). These observations indicate that it may be equivocal to determine a diagnosis of sCJD only by detecting 14-3-3, high levels of total tau protein, or the positivity in the RT-QuIC assay in CSF in cases of probable CJD. The collective results of the RT-QuIC analysis in this study showed a sensitivity of >75% and a specificity of 100% (Supplementary Table 2 in the online-only Data Supplement). Same as this study, a CSF-based RT-QuIC analysis for probable CJD patients showed a specificity of 100%, when compared to other clinical markers.<sup>8</sup> It therefore seems that RT-QuIC analysis is invaluable for definitively diagnosing sCJD when the patients are still alive. The CSF-based RT-QuIC assay will become valuable in the differential diagnosis of suspected sCJD.

In conclusion, the PrP<sup>Sc</sup>-like abnormal form of PrP was generated using the RT-QuIC reaction when rec HuPrP and the CSF of patients with sCJD were used. Thus, RT-QuIC analysis might be a useful tool for the diagnosis of sCJD patients.

### Supplementary Materials

The online-only Data Supplement is available with this article.

### Conflicts of Interest

The authors have no financial conflicts of interest.

### Acknowledgements

This research was supported by the National Research Foundation of



Korea Grant Funded by the Korean Government (NRF-2011K3A1A 1003362) and by Hallym University Specialization Fund (HRF-S-41).

## REFERENCES

- Kübler E, Oesch B, Raeber AJ. Diagnosis of prion diseases. *Br Med Bull* 2003;66:267-279.
- Yang TI, Jung DS, Ahn BY, Jeong BH, Cho HJ, Kim YS, et al. Familial Creutzfeldt-Jakob disease with V180I mutation. *J Korean Med Sci* 2010;25:1097-1100.
- Tschampa HJ, Zerr I, Urbach H. Radiological assessment of Creutzfeldt-Jakob disease. *Eur Radiol* 2007;17:1200-1211.
- Shimada T, Fournier AE, Yamagata K. Neuroprotective function of 14-3-3 proteins in neurodegeneration. *Biomed Res Int* 2013;2013:564534.
- Stoeck K, Sanchez-Juan P, Gawinecka J, Green A, Ladogana A, Pocchiari M, et al. Cerebrospinal fluid biomarker supported diagnosis of Creutzfeldt-Jakob disease and rapid dementias: a longitudinal multi-centre study over 10 years. *Brain* 2012;135(Pt 10):3051-3061.
- Aguzzi A, Heikenwalder M, Miele G. Progress and problems in the biology, diagnostics, and therapeutics of prion diseases. *J Clin Invest* 2004;114:153-160.
- Cramm M, Schmitz M, Karch A, Zafar S, Varges D, Mitrova E, et al. Characteristic CSF prion seeding efficiency in humans with prion diseases. *Mol Neurobiol* 2015;51:396-405.
- Orrú CD, Wilham JM, Vascellari S, Hughson AG, Caughey B. New generation QuIC assays for prion seeding activity. *Prion* 2012;6:147-152.
- Peden AH, McGuire LI, Appleford NE, Mallinson G, Wilham JM, Orrú CD, et al. Sensitive and specific detection of sporadic Creutzfeldt-Jakob disease brain prion protein using real-time quaking-induced conversion. *J Gen Virol* 2012;93(Pt 2):438-449.
- LeVine H 3rd. Quantification of beta-sheet amyloid fibril structures with thioflavin T. *Methods Enzymol* 1999;309:274-284.
- Atarashi R, Satoh K, Sano K, Fuse T, Yamaguchi N, Ishibashi D, et al. Ultrasensitive human prion detection in cerebrospinal fluid by real-time quaking-induced conversion. *Nat Med* 2011;17:175-178.
- Atarashi R, Sano K, Satoh K, Nishida N. Real-time quaking-induced conversion: a highly sensitive assay for prion detection. *Prion* 2011;5:150-153.
- Jeong BH, Nam JH, Lee YJ, Lee KH, Jang MK, Carp RI, et al. Polymorphisms of the prion protein gene (PRNP) in a Korean population. *J Hum Genet* 2004;49:319-324.
- Skillbäck T, Rosén C, Asztely F, Mattsson N, Blennow K, Zetterberg H. Diagnostic performance of cerebrospinal fluid total tau and phosphorylated tau in Creutzfeldt-Jakob disease: results from the Swedish Mortality Registry. *JAMA Neurol* 2014;71:476-483.
- Sano K, Satoh K, Atarashi R, Takashima H, Iwasaki Y, Yoshida M, et al. Early detection of abnormal prion protein in genetic human prion diseases now possible using real-time QuIC assay. *PLoS One* 2013;8:e54915.
- Orrú CD, Bongianni M, Tonoli G, Ferrari S, Hughson AG, Groveman BR, et al. A test for Creutzfeldt-Jakob disease using nasal brushings. *N Engl J Med* 2014;371:519-529.
- Orrú CD, Groveman BR, Hughson AG, Zanusso G, Coulthart MB, Caughey B. Rapid and sensitive RT-QuIC detection of human Creutzfeldt-Jakob disease using cerebrospinal fluid. *MBio* 2015;6(1). pii: e02451-14.